



[www.glbajajgroup.org](http://www.glbajajgroup.org)



## G L Bajaj Group of Institutions

Approved by AICTE & COA and Affiliated to Uttar Pradesh Technical University, Lucknow

Campus: 23KM Mile Stone, NH#2, Mathura-Delhi Road

P.O.: Akbarpur, Chhata, Mathura -281406 (U.P.)

Tel: 05662-241313, 07500100051

Admission Helpline : 91-8477820001/2

e-mail: [admission@glbajajgroup.org](mailto:admission@glbajajgroup.org)



GEARED UP  
*future*

PROSPECTUS  
[www.glbajajgroup.org](http://www.glbajajgroup.org)



## G L Bajaj Group of Institutions

Approved by AICTE & COA and Affiliated to Uttar Pradesh Technical University, Lucknow

# Our Inspiration



**Late Sh. Ganeshi Lal Bajaj**  
(1910 - 1977)

In the fond memory of Late Sh Ganeshi Lal ji Bajaj, our revered lineage, we at G L Bajaj Group of Institutions take vow to devote ourselves unceasingly in the pursuit of excellence in multi-dimensional arena of fields of professional education.

## vision

To metamorphose every individual aspirant mind of the country into a truly potent global technocrat preserving the traditional, moral and ethical values of our nation by means of delivering exemplary education aggrandized further within high-tech discipline academic environment.



## mission

### We are committed

- To identify young people with professional and entrepreneurial aspirations, talents & determination and trigger them off to become excellent inspirational leaders in their chosen pursuits
- To provide an educational environment that emphasizes technical attitude and managerial skills
- To produce knowledge that fosters better understanding of global issues
- To spark research oriented & inquisitiveness and provide all sorts of facilities for research to get this translated into innovativeness.
- To embrace the Social Responsibility by taking initiative and measures that can lead to the upliftment of whole society.



# Welcome Note from the Chairman

G L Bajaj has been brought into being solely for spawning the legion of farsighted professionals and astute technocrats, remaining always ahead to contribute meaningfully to the nation. Throwing sight on the prevalent state of affairs in the world, it becomes comprehensible that the burgeoning advancement in the arena of technology and astounding revolution in the field of information have breed a new range of challenges and coveting opportunities. For the youths aiming to live the glorious path of perfection and excellence, this is the right time to rise and hold the opportunity. And, G L Bajaj too taking this epoch a right moment to offer a parental hand to these path-seekers is all prepared to do whatsoever. The motive behind this yearning is just an insatiable wish, which I have lived with from my childhood. The desire that has been blazing within me from my early days is to hand on the world such a muster of skilled work force, who are able to collect bounty of applauses for their panache from the intellectuals around the world, and can make our India, a county of genius and masterminds

I assure you all that no efforts will be spared to bring the institute on the globe. From the core of my heart, I am thankful to all stakeholders who are steadily striving hard to establish GL Bajaj as one of the leading Technical Institution.

I welcome and congratulate you for beginning this great journey leading to the shimmering career.

Dr. Ram Kishore Agrawal



“Throwing sight on the prevalent state of affairs in the world, it becomes comprehensible that the burgeoning advancement in the arena of technology and astounding revolution in the field of information have breed a new range of challenges and coveting opportunities.”

# Welcome Note from the Vice Chairman

G L Bajaj Group of Institutions, an integrated campus disseminating Technical, Architectural and Management Education is an aspired dream of all of us to promote excellence in the multi-fields of technical education and provide quality training. Education at GLBGI builds character, sharpen intellect and encourage free thinking. Along with this, the magnificent placements track carved this year by our students in premier corporate world have confirmed that we are going in the right direction and has been achieving successfully our mission.

There are certain added advantages students are enjoying over here at G L Bajaj. The regular exposure of students to new knowledge, future trends through the timely organization of expert's visit and guest lecturers is one of the many Besides all, regular classroom teaching, all kind of referral and research help in library, experimentation in the laboratories and personality development in seminar halls are some usual facilities being provided over here but in your own way.

I am confident that the budding professionals of GLBGI will be Industries trustworthy & valuable assets who can take on the toughest challenges ahead. We take the responsibility of developing and nurturing the world-class skilled & dedicated technocrats and managers who are competent enough to meet the global challenges.

With an assurance of yours best nurturing and advancement towards secure future, I welcome you all again.

Pankaj Agrawal



“There are certain added advantages students are enjoying over here at G L Bajaj. The regular exposure of students to new knowledge, future trends through the timely organization of expert's visit and guest lecturers is one of the many Besides all, regular classroom teaching, all kind of referral and research help in library, experimentation.”





## Managing Director's Warmth Expression

With Immense pleasure, I would like to extend my warmth greetings to all the new-entrants at G L Bajaj Group of Institutions. We assure to maintain the highest quality in every scenario, we are involved. We believe that all youths have potential to become leaders in their respective fields, they just need a small thrust to unleash that power and turn them into true leaders who would be caring, ready to learn, ambitious to achieve and readily embrace social responsibilities.

The objective of the Institute is not only to produce man power with academic knowledge but also grooming Industry leaders with concrete technical knowledge.

G L Bajaj uses rigorous and intensive integrated teaching methods to prepare the students to take up technical & business positions in any environment. Academic excellence, holistic education; global relevance and contemporaneous curriculum continue to be the corner stone of G L Bajaj educational edifice.

**Manoj Agrawal**

## From the Director Desk

I feel excitingly delighted to welcome the new batch into a knowledge citadel standing on the four pillars of Inspiration, Dedication, Accession and Attainment. Be ready to march on an incredible journey to be continued until you all achieve your dream destinations successfully.

Our commitment is to light the flare of hope and optimism in the lives of youth by the means of skilled professional backing, institute have been able to produce global citizens consistently. On the mentor part, the teachers here strive to mould the students to face the challenging world and also encourage students to take up entrepreneurship. Our aim is to provide valuable resources for industry and society, to enforce this in practical, institute constantly provides in-house PDP trainings along with industrial visits and guest lectures.

Equally important target, on which continuous efforts are being laid down, is to provide our students the world class technological knowledge and skills. To tread on the path, institutes are remote canter of IIT Bombay, IIT Kharagpur, and IIT Delhi. Furthering this network to the international horizon, GLBians are enjoying IEEE student chapter advantage. And on the national level, institute is also a student chapter of IGBC.

On the society frontal too, GL Bajaj has always to prompt to complete social accountability on priority. Traversing on this path, we embraced social responsibility to re-engineer Nari Semari in a model village.

I welcome you again and wish you to keep rising in every arena of your life triumphantly, and win laurels, glistening with flying colors. God speed you! These words come from the core of my heart and take for sure these will lead you to our envisioned goals and your dream destinations.

**Dr. Meenu Gupta**



“At G L Bajaj, we maintain the highest quality in whatever we do. We believe that all our students have potential to become leaders in their respective fields and we can unbridle that potential and turn them into true leaders who are caring, learning, achieving and sharing social responsibilities.”

“Our commitment is to light the flare of hope and optimism in the lives of youth by the means of skilled professional backing, institute have been able to produce global citizens consistently. On the mentor part, the teachers here strive to mould the students to face the challenging world and also encourage students to take up entrepreneurship.”



## Dedicated to generate exceptionally enriched professionals of future

With a firm belief that only professional education has a potential to lay a strong foundation that can result in the blissful economic and social changes to the lives of millions, RK Education Hub went about reshaping diligent and dedicated Indian youths in the form of global multifaceted talents through an array of Educational Institutions. Incepted in the year 1997 under Rajiv Memorial Academic Welfare Society, Mathura has demonstrated meteoric growth since the beginning. We are well known for high quality academic programmes, exceptionally high training standards and friendly learning environments. We are dedicated to the pursuit of education excellence, offering a wide range of courses that are globally recognised in the fields of higher education i.e., Engineering & Technology, Architecture, Management, Computer Applications, Pharmacy, Dentistry, Teacher Education, Basic Science & Library Science and now in Medical Science also. Presently seven institutes and one International School are thriving under the banner of R K Education Hub.



## G L Bajaj Group of Institutions Mathura

Estd. 2009

Approved by AICTE, COA and Affiliated to UPTU, Lucknow

### Courses offered

- B Tech
  - Civil Engineering
  - Mechanical Engineering
  - Electronics & Communication Engg.
  - Computer Science & Engineering
- B Arch
- MBA
- MAM



## G L Bajaj Institute of Technology & Management, Greater Noida

Estd. 2005

Approved by AICTE and Affiliated to UPTU, Lucknow

### Courses offered

- B Tech
  - Civil Engg.
  - Mechanical Engg.
  - Electronics & Communication Engg.
  - Electrical & Electronics Engg.
  - Computer Science & Engg.
  - Information Technology
- M Tech
  - Computer Science & Engg.
- MBA
- MCA



## G L Bajaj Institute of Management and Research Greater Noida

Estd. 2006

Approved by AICTE and Affiliated to UPTU, Lucknow

### Courses offered

- PGDM
- MBA







## K D Dental College & Hospital, Mathura

Estd. 2001

Recognized by the DCI & Affiliated to  
Dr B R Ambedkar University, Agra

### Courses offered

- BDS
- MDS
  - Orthodontics
  - Conservative Dentistry
  - Oral Medicine & Radiology
  - Community Dentistry
  - Pedodontics
  - Prosthodontics
  - Periodontics
  - Oral Pathology
  - Oral Surgery



## Rajiv Academy for Teacher Education, Mathura

Estd. 2004

Approved by NCTE & UGC and affiliated to  
Dr B R A University, Agra

### Courses offered

- B.Ed.



## Rajiv Academy for Technology & Management, Mathura

Estd. 1998

Approved by AICTE, UGC, NCTE, Affiliated to UPTU &  
Dr B R Ambedkar University, Agra

### Courses offered

- MBA
- MCA
- M Ed
- M Lib I Sc
- B Sc (CS)
- MAM
- BBA
- BCA
- B Ed
- B Lib I Sc
- B Com (e-com)



## Rajiv International School, Mathura

Estd. 2010

Affiliated to CBSE, New Delhi

### Courses offered

Nursery to XII



## Rajiv Academy for Pharmacy, Mathura

Estd. 1999

Approved by PCI & AICTE and affiliated to MTU

### Courses offered

- B Pharm
- M Pharm
  - Pharmaceutics
  - Pharmaceutical Chemistry
  - Pharmacognosy
  - Pharmacology



## K D MEDICAL COLLEGE HOSPITAL & RESEARCH CENTER Mathura

Estd. 2014

To be Approved by MCI

### Courses offered

MBBS\*

\*Approval in Process



## G L Bajaj Group of Institutions. The Bastion sculpting the exemplary techno-giants of 21st century

G L Bajaj Group of Institutions is radiating the path of young generation of engineer, architects and managers since 2009. GLBGI is a vibrant student-centered college that thrives on leadership, collaborative and a winning spirit — in the avenues of Engineering & Technology, Architecture and Management. GLBGI is duly approved by AICTE, COA & affiliated to UPTU.

The institute has strategic location on National Highway#2 between Delhi and Agra. It is 128 km away from National Capital, New Delhi, 72 km from Taj Nagri, Agra and main location is at Akbarpur, Mathura. The campus is well connected and easily commutable through rail and road.



### Reasons to Choose G L Bajaj

*As a distinguished institute G L Bajaj boasts on its exceptional strengths like*

#### State of Art Infrastructure

- Aesthetically designed Infrastructure.
- Richest Infrastructure accommodated far from stressed atmosphere of city in 28 acres surrounded by Lush Green panoramic view.
- Classrooms furnished with modern gadgets and kit.
- Absolute state-of-the-art computer labs.
- As it has been rightly said that "Experiment makes scientists" following this saying all Engineering, Architectural labs are specially designed with ultra-modern equipments.
- 24 x 7 Globally connected with wi-fi of 20 MBPS
- Spacious library having innumerable books, periodicals and journals in the form of both print and online media with book bank facility.
- NATA Centre approved by Council of Architecture
- Seminar halls designed skill fully to make the lectures highly interpersonal.
- Abundant indoor and outdoor games and sports facilities.
- Round the clock medical caring
- Enormous fleet of buses connecting city and outskirts area: to & fro facility
- Well furnished separate hostels for boys & girls.
- Accommodating in-campus branch of Oriental Bank of Commerce with ATM facility

#### A reputation of Excellence

- 1st rank in UPTU results in Mathura-Agra-Aligarh

#### Our experienced team

- A Syndicate of experienced highly qualified faculty members.
- IEEE inducted Director of G L Bajaj, Mathura in Editorial Team of its Region-10 Newsletter
- Faculty participates in various National & International conferences & Workshops.
- Faculty members are encouraged for higher studies.

#### Supporting students on global scale

- Remote Centre of IIT- Bombay & IIT- kharagpur
- Nodal Centre of IIT-Delhi
- IIT-Bombay is all set to establish Robotics Lab under e-Yantra Project
- Research Center of Aakash-II Tablet Project
- Student Branch of IEEE
- Student Chapter of Indian Green Building Council
- Collaboration with TCS for providing Infrastructure Services

#### Practical, not Fantastical

- 360 Exposure through industry visits, corporate talks & academic tours.
- Workshops for students & faculty by IITs.
- Participation in activities of NASA and NIASA
- Embracing Social responsibility to re-engineer Nari-Sameri in Model village.
- Life Membership of IETE

#### Industry expertise

- Placements with leading National & Multinational companies
- More than 50 companies visited for placements in 2014-15
- 100% placement in MBA



## School of Engineering & Technology

**Bachelor of Technology (B Tech)** **Duration** **4 years**

	<b>Intake</b>
Mechanical Engineering	120 seats
Electronics & Communication Engineering	120 seats
Computer Science & Engineering	120 seats
Civil Engineering	60 seats

### Eligibility: B Tech (First year)

Candidate must have passed Intermediate or 10+2 examination or its equivalent securing minimum 45% (40% for SC/ST) marks in total of Physics and Mathematics along with any one of Chemistry, Computer Science, Biology and Biotechnology

### B Tech: (Lateral Entry Scheme)

Candidate must have passed 3 year Diploma from institutions recognized by the U P Board of Technical Education in relevant branch of Engineering/Technology or B.Sc. Graduates with Mathematics as one of the subjects at XII standard.

## School of Architecture

**Bachelor of Architecture (B Arch)** **Duration** **5 years**  
Intake : 40 seats

**Eligibility:** Candidate must have passed without grace 10+2 with Mathematics and Physics with minimum of 50% (45% for SC/ST) marks in aggregate along with any one of Chemistry, Computer Science, Biology, and Engineering Drawing. Must have qualified UPSEE or NATA.

## School of Management

**Master of Business Administration (MBA)** **Duration** **2 years**  
Intake : 60 seats

**Eligibility:** Candidate must have passed graduation or its equivalent from any recognized university securing minimum 50% (45% for SC/ST) marks in aggregate.

**Master of Applied Management (MAM)** **Duration** **5 years**  
Intake : 60 seats

**Eligibility:** Candidate must have passed 10+2 from any recognized Board securing minimum 50% (45% for SC/ST) marks in aggregate.

# Unbeatable Privileges of bond with Premiers

## Associations

### Remote Center: IIT Bombay, IIT Kharagpur and IIT Delhi

Moving an extra inch to give its students a special niche, G L Bajaj has joined hands with major Indian educational premiers. To provide intense and specific ground to our engineering students, institute has tied-up links with IIT- Bombay, IIT- Kharagpur as remote center and IIT Delhi as Nodal Center. Since 2011, institute has consistently been organizing a range of workshops and project seminars and tutorial classes for faculty as well as students. Apart from this, in order to inculcate the updated knowledge of various topics related to Engineering, faculty is encouraged to participate in various workshops organized by IITs through the use of A-VIEW Technology.

### Workshops Conducted by IIT Bombay @ G L Bajaj Campus

Engineering Thermodynamics  
Research Methods in Educational Technology  
Database Management Systems  
Half Day ISTE Workshop on Green Building Awareness  
Engineering Mechanics  
Computer Programming  
Computer Networking  
Cyber Security  
Linux through Spoken Tutorial Project by IIT Bombay  
Linux + Sci Lab + C /C++ through Spoken Tutorial Project  
Environmental Studies

### Workshops Conducted by IIT Kharagpur @ G L Bajaj Campus

Engineering Thermodynamics  
Analog Electronics  
Signals & Systems  
Fluid Mechanics

### Aakash-II Tablet Project Centre

The effective use of information and communication technologies helps significantly in improving the quality of education being disseminated. Aakash project of IIT Bombay is dedicated to the development of useful applications and contents for use with Aakash Tablet. It attempts to empower students by using a unique blend of technology, e-contents, and an innovative pedagogy. While the main focus of this project is on engineering education, it is also proposed to use the creative talent of these professional students and teachers, to develop applications and contents for all levels of education, including school education in Indian languages.

### IGBC (Indian Green Building Council) - Student Chapter

'Greener World, Happier Human' talking this as a prophecy, G L Bajaj has started to talk on this. Not merely to follow in world, but to step on it in real, G L Bajaj has joined hands with IGBC. This initiative step will surely ignite the idea of green in the young minds, thereby facilitating India to become one of the global leaders in embracing green building concepts by 2020.



## IEEE Chapter Membership

To advance the inclination of students towards doing innovations, in the fields of aerospace systems, computers and telecommunications, electric power consumer electronics etc G L Bajaj has entered into the renowned global professional association IEEE by becoming its member. This drive towards students' excellence will certainly elevate their technological advancement in comparison to the others. Not only this will stand them as an elevated than others but will also give them an extra edge on global platform. Undoubtedly, this global initiative will birth future innovators and a vital part of the technology profession. Above and all, this membership will enhance students careers prospects. IEEE membership can help enhancing careers, starting as students and transitioning to the future techno-leaders help shape the future for our society.

## IEEE-WIE

G L Bajaj Group of Institutions, Mathura takes pride in announcing that IEEE Women in Engineering Committee has conferred GLBGI with status as Student Branch Affinity Group of IEEE Women in Engineering. IEEE WIE is to facilitate the global recruitment and retention of women in technical disciplines. IEEE WIE envisions a vibrant community of IEEE women and men collectively using their diverse talents to innovate for the benefit of humanity.





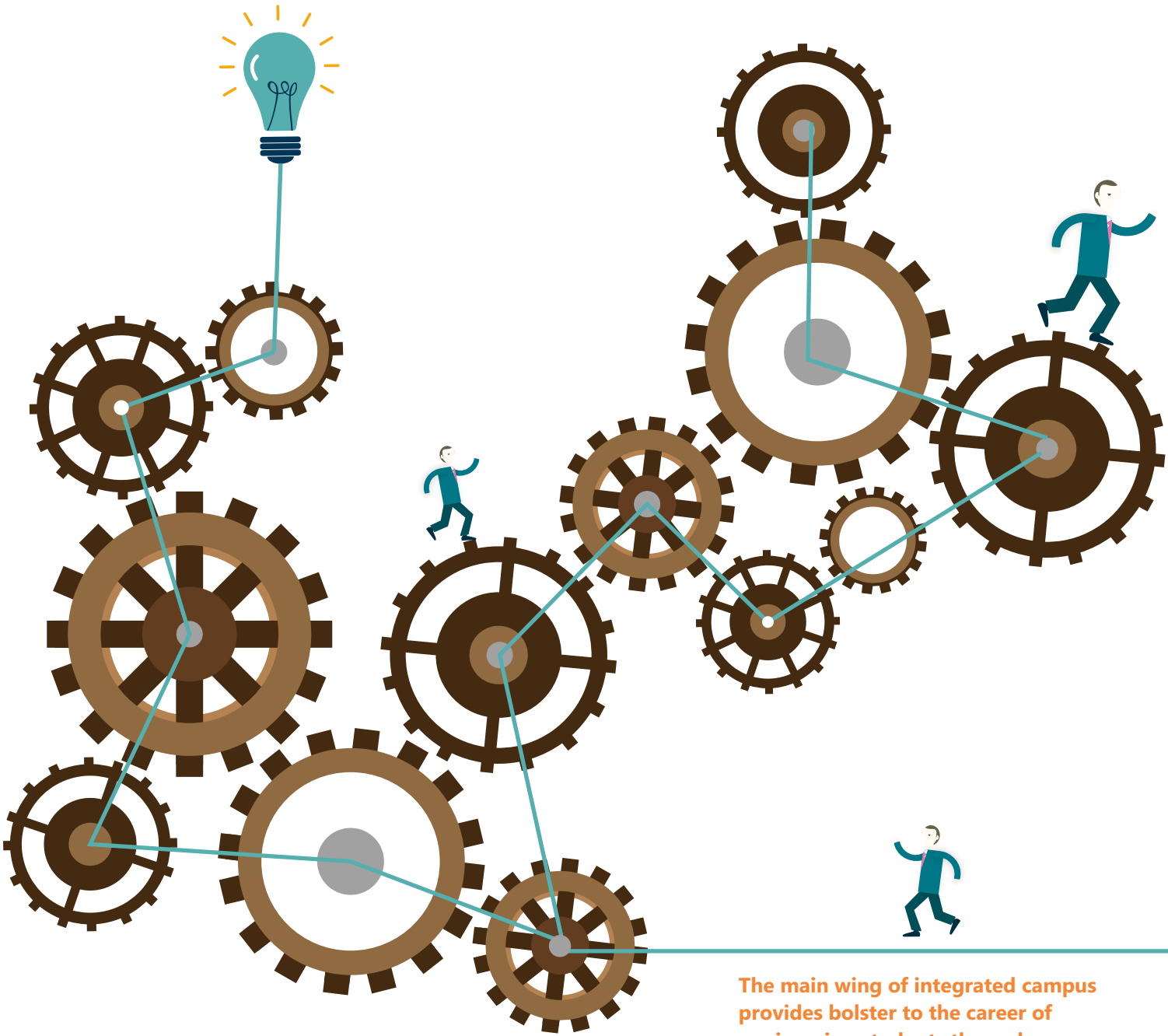
# Pedagogy at GLBGI

We have always given due importance to faculty-student interaction. Our teaching methodology validates this system in true sense. Along with this we provide a complete learning and developing environment through Academic (in-bound) and Industry (out-bound) interface.



The Institute conducts Personality Development Programme on regular basis. The in-house and out-source professionals from corporate & academic world enhance and upgrade the job-oriented knowledge and skills of the students.

# SCHOOL OF ENGINEERING & TECHNOLOGY



The main wing of integrated campus provides bolster to the career of engineering students through four flourishing departments.





## Department of Civil Engineering

“The best creator next to god is civil Engineer”

Civil engineering is the oldest of the main branches of engineering. Civil engineers use their knowledge to supervise and plan construction projects such as roads, airports, bridges, canals, tunnels, and wastewater systems. They also collaborate with architects to design and construct various types of buildings. Some other civil engineering endeavors include highways, airports, pipelines, railroads, levees, irrigation and sewage systems. If it is built in or on the ground, from the design and execution of large infrastructure projects to development of solutions, everything comes in the purview of Civil engineers.

### LABS

#### Laboratories:

- Surveying Lab
- Geo-informatics Lab
- Hydraulic & Machine Lab
- Transportation Lab
- Geo-Technical Engineering Lab
- Environmental Engineering Lab
- CAD Lab
- Structural Analysis Lab
- BPD Lab
- Building
- Engineering Graphics Lab
- C, C++ Programming Lab
- CBSNT Lab



## Department of Mechanical Engineering

“When all other staves, Mechanical Dares”

Mechanical Engineers are responsible for transforming the energy and forces existing within the surrounding bodies and nature as per the needs of the human civilization. From sparking the necessary power to the designed structures to controlling the mobility of these is possible only due to the brainwork of the Mechanical Engineers.

As the world's population grows and issues of energy consumption and transport demand become more pressing, innovation in this area is critical to our future and lucrative to mechanical engineers for career opportunities.

### LABS

#### To sustain teaching and research activities in the department the various laboratories & workshops are set up

- Thermodynamics Lab
- Measurement & Metrology Lab
- Manufacturing Science Lab
- Heat & Mass Transfer Lab
- Fluid Machinery Lab
- Mechanics Lab
- Electric Machinery Lab
- CAD/CAM Lab
- Refrigeration & Air Conditioning Lab
- IC Engines & Automobile Lab
- Fluid Mechanics
- Workshops(Welding, Foundry, Smithy, Carpentering, Metal Cutting)
- Theory of Machines Lab
- Machine Design Lab
- Engineering Graphics Lab
- Machine Drawing Lab
- C, C++ Programming Lab







## Electronics & Communication Engineering

“The Designers of the Destiny”

If you are interested to learn and play with the beautiful complexities of the framework of designs than Electronics & Communication can be a great choice for you. Yours choice to live with complexities of designs can compel you to embrace the mysterious world of micro chips, electron circuits, semiconductor devices. It can take you from live-saving equipments to the life partners like mobile phones, tablets, smart phones, electronic gadgets etc. G L Bajaj as a right choice for you, could provide huge scope to develop your technical skills and ingenuity about non-linear and active components like electron tubes and semiconductor devices. As an integral part to make proficient EC enthusiast, G L Bajaj has a set up of all kind of Hi-tech Laboratories & workshops like:

LABS

- Electronics Measurement Lab
- Digital Electronics Lab
- Electronics Workshop & PCB design
- Microprocessor Lab
- Communication Lab
- CAD of Electronics lab
- Integrated Circuit Lab
- Control System Lab
- Microwave and Fiber Optics Lab
- Electronics Devices
- Network Analysis & Synthesis
- Electronic Circuit design
- Digital Signal Processing Lab



## Computer Science & Engineering

“Responsible to transforming the world into bits and bytes”

The information technology revolution has probably reached a billion people of the world so far. In the next 5 years, it will reach the next billion. As IT is touching the lives of the many, the importance of computer science is becoming vital. With relevance to commerce, science and government, as well as to communications and entertainment, studying computer science develops analytical thinking and creative problem-solving skills important for a challenging and fulfilling career.

LABS

- Computer Centre & Labs with latest software
- Aakash-II Tablet Research Lab
- E-Yantra Lab
- Robotics Lab







## Applied Science and Humanities

Fields of engineering are closely related to applied sciences. Applied science plays an important role of an annexure with technology and its development. Its use in industrial settings is usually referred to as research and development (R&D). It includes testing a theoretical model through the use of formal science or solving a practical problem through the use of natural science. To promote researches and innovations in the field institute has set up the following laboratories.



### LABS

- Computer Aided Language Lab
- Physics Lab
- Engineering Chemistry Lab
- Communication Lab



## SCHOOL OF ARCHITECTURE



Architecture has to do with planning, designing and constructing form, space and ambience to reflect functional, technical, social, environmental and aesthetic considerations.





architecture



## School of Architecture

“All Master- Wonders standing on this earth showcase dormant potential of the Architects”

Architecture, the science of building, is the visualization of building blocks. It is the area of study which deals with the designing and planning of buildings and structures and the spaces between them. Architecture is a highly competitive and multi-disciplinary profession which involves a variety of tasks at work. This is a field which covers various fields including spatial design, aesthetics, safety management, material management etc.

### Future Prospects

Architects are the real creators of amazing buildings, sky scrapers and other structures. Most of the jobs in architecture come up in organizations such as Public Works Department, Archaeological Department, National Building Organization, Town and Country Planning Organization, Departments of Railways, Public Sector Undertakings, Housing and Urban Development Corporation, National Building Construction Corporation Ltd., etc. While some other local bodies for Construction works, Builders, Architecture Firms, Interior designers, Landscape consultants, Real estate development firms, etc. also hire architects. India is a developing country, architects have ample scope in terms of show casing their talent & earnings.

For further studies, students have varied options at postgraduate level; environmental planning, town planning, urban planning, landscape design, urban design, urban & rural planning, housing, sustainable architecture, physical planning, conservation, advance computers in architecture etc.



- Studios
- Lecture halls
- Audio-visual hall
- Computer Lab
- NATA test center
- Climatology Lab
- Material testing lab
- Surveying & Levelling lab
- Material Museum
- Model making workshop
- Library & Resource center
- NASA room
- Student common rooms
- Exhibition galleries
- Research cell

### Initiatives taken by school to address societal concerns:

The task of Architecture faculty extends beyond the studio, workshop, lectures and seminars. The department has been involved in various research activities which are addressing the societal concerns. One such project is Sustainable Development Plan of Village: The Institute has adopted one nearby village Nari-Sameri. Proposals for the Development of Village were identified to promote; Employment, Education, and Society.

## SCHOOL OF MANAGEMENT



Management studies discuss the effective utilization of resources through planning and direction, resulting in the successful operation of business. The field makes use of resources such as men, money, material and management. Management studies discuss the effective utilization of resources through planning and direction, resulting in the successful operation of business.





management





## School of Management

“Management is achieving goals in a way that makes judiciously the best use of all resources”

Management fulfills a concept that makes it nurturing, supportive, coaching and developmental for the professionals. Management needs to be upgraded for the 21st century. It needs to cast off its negative image as mechanistic, controlling and task oriented. Management studies discuss the effective utilization of resources through planning and direction, resulting in the successful operation of business. The field makes use of resources such as men, money, material and management. Management studies discuss the effective utilization of resources through planning and direction, resulting in the successful operation of business. The following activities are the core part of curriculum at G L Bajaj



LABS

- Management Simulation
- Industry Visits
- PDPs (In-House & Out-Source)
- Case Study
- Role Plays
- Management Games
- Guest Lectures: Academia & Corporate
- Industry training



## Mission Placement

*Facilitating to grab 360° opportunities*

Corporate Resource Centre (CRC) is a wing of GLBGI dedicated to establish and expand its network with corporate. The cell works with potential employers from different sectors to understand their needs, analyze them and create opportunities for students, both through campus and off-campus placements. The CRC also organizes Management Development Programmes, customized Training Programmes on a range of topics, professional development activities- communication enhancement, Boosting interviewing skills and career guidance. It is an active member of National HRD Network, All India Management Association (AIMA), and All India Management Schools International (AIMS International).



## Campus Placement

*Turning aspirations into success stories*



### Computer Science & Engineering



### Mechanical Engineering



### Civil Engineering



### Electronics & Communication Engineering



### Master of Business Administration (MBA)



Since beginning, G L Bajaj works intensively to figure out the peculiar innate attribute of each student and head with chiseling these aspects. Parallel to this, Institute continues to infuse in students the qualities making them the best choice for the corporate. For this, institute has established a full-fledged Placement cell which keeps hawk eye on the market and corporate needs, Accordingly, this cell imparts pre-placement training to all pre-final year students to enable them to acquaint to the current corporate requirements. In every way, this cell facilitates students to face all kinds of interviews & grab jobs of their choice. The top companies which visited the campus for placement in 2014-15 are as follows:



### Industry Exposure

#### *Studying as well as hand-on experience in the Industry*

GL Bajaj Group of Institutions prefers to impart curriculum teachings with proper practical exposure by the way of frequent industry exposure. So that students can confidently enter the industry with both theoretical knowledge as well as a thorough understanding of the practical working of the industry. The industry exposure enhances the undergraduate's work life through added enthusiasm and commitment; provides a lifelong learning experience; is an opportunity to engage with the profession to which they aspire in a realistic work environment; appreciate and understand the practical application of their academic program; work with professional mentors.





Mr. Shailendra Kumar-Escorts



Mrs. Praveen Chauhan  
Vice President - HR & Admin,  
Agarwal Movers Group



Prof Rameshwar Saran  
TransAuth LLC, USA



Prof Akhil Swami  
Amity, Noida



Mr. Rakesh K Sidana  
Founder, MeriCar.com



Mr. Naresh Singhal  
Renowned Vaastu Expert

### Guest Lectures

*providing a firm foundation in academic pursuits*

GL Bajaj Group of Institutions, we are determined to make available every resource to our young technocrats which could get excel them as high achievers in the domain they choose. On the whole, to Groom our students towards rewarding career, we lay emphasis on instilling such lectures that may make them to stand out on the global platform. With this in mind GLBGI has developed a strong network of eminent corporate honchos, leading technocrats, from the leading organizations across the world for delivering guest lecture to the students.

### Academic Tours

*filling life with excursions*

"Going on trips isn't just a fun way to spend a semester, rather it plays a role of catalyst in overall learning experience at college level" This goes absolutely true, when we monitor the ultimate performance of students. This is the reason that GLBGI believes in merging concentrated classroom learning with a broad range of new experiences during academic tours. Cheered with the results, GLBGI has annexed regular academic tours into its calendar. To deepen this opportunity for new learning, institute has consistently been organizing academic-oriented study tours so that our students may discover and learn all that is still unscripted in the course books.







## VISAGE National Techno - Cultural Youth Fest

Infusing creativity, fun, personality grooming, talent exposure, and sparking innovativeness are some of the main aims behind scheduling this fest within the annual calendar of G L Bajaj. Through this platform, students get ample opportunities to vent out their extraordinary skills. It is a two-day long celebration inviting participants from several professional colleges across the country. It comprises a range of exciting action-full as well as mind boggling activities in technical and cultural events.

# Events & Celebrations

## ADAMYA

*An ideal platform for sporting daring deeds*

G L Bajaj has reserved a new avenue within the annual calendar, in the form of grand sports meet "ADAMYA" to be organized annually to infuse the spirit of cooperation and responsiveness among students. This sports event covers three days for its organization. And during these three days, students let loose their vigorous zest and zeal enthusiastically through a number of indoor & outdoor games like Cricket, Table Tennis, Basketball, Volleyball, Race, Long Jump, shot put, Chess and various sorts of races. e performance and progress of the students.



## | Events & Celebrations |

### Engineer's Day

Every year G L Bajaj commemorates the birth anniversary of Sir Mokshagundam Visvesvaraya on September 15. The Institute celebrates Engineer's Day to recognize not only to reveal importance of engineer's work for society but also to revive the memory of Engineers that they are the ones whom entire mankind eyes with great hope and expectation. The budding Engineers use their imagination and analytical skills to invent, design, and crack the quizzes and puzzles conducted on this day among students. G L Bajaj celebrate this day by conducting many events that enhance their talents and investigative dexterity.



### International Women's Day

G L Bajaj celebrates women's day as all GLBians feel that it is their duty to express gratitude to all women in their life, as a mother, sister, friend, peer...to all known and unknown women's across the globe !!!

### World Architecture Day

World Architecture Day (WAD) is celebrated on the first Monday of October. Various events take place



on this day in the institute. The events are planned to promote good architecture, raise public awareness towards the architectural potential as well as their role in creating the future shape of modern world.

### Orientation Programme - Embracing the new faces in G L Bajaj Family

Deviating from the common practice of getting the new-comers directly within the contour of classroom, G L Bajaj Group of Institutions, Mathura always plans to make the coming of new steps a memorable and encouraging one. To make this day unforgettable one for the newly-admitted an Orientation-cum-Intro programme is organized. The major intention to call this introductory gathering is to make the parents and students conscious of the academic aspects of the course, the rules and regulations of the Institute and ensuring parental participation in monitoring the performance and progress of the students.



## Research and Publication - *Stretching the boundaries*

Every Engineering college should be familiar with and must accept this reality. Owing to this, G L Bajaj Group of Institutions has always set its focus on streamlining all sorts of opportunities in the directions of research and publications. Institute has been laying its major emphasis to provide every kind of facilities available around to the vital organ of teaching-learning sphere i.e. faculty and students to exhale innovative talents, scientific views, changes in the basic concepts and refinement of the theoretical parts. No doubt, these efforts have always reflected the miraculous results in terms of adroitness and creativity enhancement. To sustain the quality further and forever, research work and publication work act as propellers for a professionally advanced educational organization which aspire to sail ahead in the ocean of education. Publications of newsletter, journal, and books are of paramount significance in the knowledge dominated information age.

### Research Journals:

**Innovativeness Springs Out, If Find A Suitable Way To Vent**

**Knowledge Hub (ISSN: 0973-6425)**

*The bi-annual peer-reviewed Research Journal of Management*

To promote original research papers, perspectives, interviews, management cases, book reviews, review articles with academic rigors and practical relevance for advancing the existing knowledge base in the field of management & technology. Knowledge Hub got listed in Cabell's Directory, Taxes-USA.



### Books

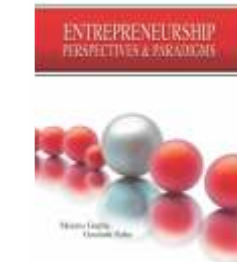
**Entrepreneurship: Perspective & Paradigms**

**Author : Meenu Gupta & Goutam Saha**

**ISBN No.: 023-063-670-5**

**Publisher : Macmillan India Limited**

This book encompasses all the prominent areas of entrepreneurship, with the comprehensive approach and presents a wide range of perspectives and paradigms of entrepreneurship related phenomena.



☞ **Stagnant water loses its purity and in cold weather becomes frozen; even so does vigor of the circumscribed mind** ☞

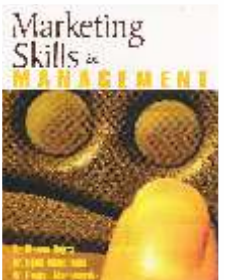
### Marketing Skills in Management

**Author: Meenu Gupta, Upali Mahanama & Ranjan Madanayake**

**ISBN No. : 978-81-7446-573-3**

**Publisher: Excel Books**

A research-driven reference book authored with two Sri Lankan writers provides a road map on marketing administration, new product development, the power of e-marketing that will surely be helpful for the marketing practitioners and scholars.



### National Conference

Research and exposure to new areas is one basic attainment of getting the education and here also G L Bajaj leave no stone unturned. The two days highly research bombarding conference in the field of information technology was one such platform for the students as well as for the faculties where all can share innovation and knowledge creation. Various experts discussed on the topic: Spectrum of the information technology and initiative the new ideas for budding researchers to work further. Networking with these experts is highly facilitated among students for their personality grooming and over all development.





## Aide-de-Professionals Zone



### Library

***If there is a paradise, it must be a sort of Library***

The library of the GL Bajaj houses rich and diverse collections of information resources to support the teaching and research of our engineers, architects and managers. Some outshining features include

- Reservoir of around Twenty Six thousand of books
- More than one hundred and fifty National & International research journals.
- Around Three thousand and three hundred E-journals.
- DELNET, a digital library network connects the institute to 1000+ libraries along with electronic database accessing facility
- Inter-Library loan facility allowing the users to borrow books from abroad.
- Book Bank facility
- Well stocked reference section

### Advanced Computer Labs

***Second to None***

- 400 plus Computer Systems with latest configuration
- Adequate System & Application software including latest licensed antivirus
- 20 Mbps round the clock internet with Wi-Fi facility

### Class Rooms

***Distinctive extension of outdoor counterpart rather than mere big rooms***

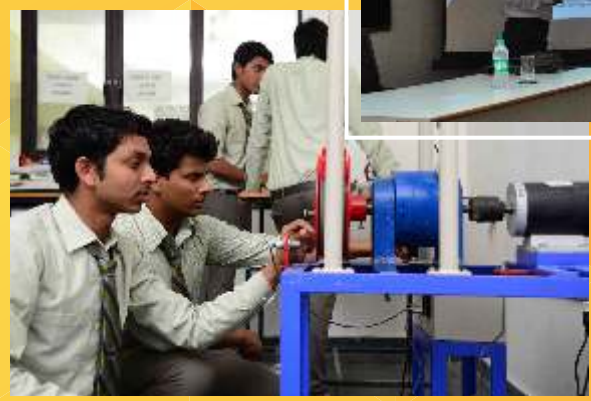
GL Bajaj is aware with this fact that accurately-designed classrooms environment support exploration enables technocrats and managers to engage in focused, self-directed learning. Through the use of platforms, fairly open areas, flow of natural light and fresh air from the doors and windows, the rooms are sculpted to provide a real teaching-learning experience. Our classroom features-

- Big and spacious well-lit & well ventilated classrooms have been specially designed and built to hold lecturers that are highly interpersonal
- To complement traditional methods of teaching, the use of advance aids like LCD Projectors, Public address system and various other online gadgetries are provided

### Seminar Halls

***Comparable to the best only***

GL Bajaj has magnificent seminar halls, comparable to the best in the world. Three Spacious and fully Air- conditioned seminar halls equipped with excellent acoustics for interactions with practitioners and other professionals are available and are used extensively for activities like workshops, conferences and other such events.



## Embellishments-de-Academics

### Hostel

***With Adjoining Mess-A Home-Away-Home***

A large Mess Hall attached with all modern cuisine cooking facilities enables all students and staff to have lunch, breakfast and dinner at the same time. Along with this, Separate hostel accommodation has been provided for boys and girls. A spacious room well ventilated designed for comfort and equipped with bed, study table and cupboards provided for the students. Each floor has facilities for toilets, bathroom, common room, recreation activities i.e. TV, indoor games and newspapers.

Strict schedule of life is the essence of hostel life. Our efforts are to cast their character in the correct mould that will anchor them to discipline. Every care is taken to ensure wholesome, healthy food through the mess.



### Cafeteria-cum-Canteen

***Enjoying leisure with snacks and coffee***

G L Bajaj accommodated the cafeteria providing excellent facility of opting from a long menu for having snack and food items from dawn to dusk. It is beautifully designed and with proper seating arrangement and is a place for relaxation and discussion.



### Sports

***Technocrats' off Class Recreation***

It's not 'all work and no play' at GLBGI. We very strongly believe in the old adage of "a healthy body has a healthy mind". Our Institute tries to expose the students to extracurricular activities that include sports, music and participation in local/national level competitions etc.

### In- campus Bank facility

To provide the door-step money transaction facility for the students & staff, the institute has in- house Bank - Oriental Bank of Commerce (OBC) with adjoining ATM facility.



### Transportation

***Brisk and luxurious fleet facility for students***

The institute has its own extensive fleet of buses, vans and cars for conveyance of staff and students from every nook and corners of the Mathura and around the city. The vehicles are the best of its kind, latest & fulfill the environmental & safety norms.

### Medical Facilities

***Body feeling uneasy- here comes the remedy***

A first-aid and sick room is available in the institute, equipped with all necessary facilities which is available 24X7 365 days. A physician visits the hostels regularly for providing free consultancy to the students. In medical emergency, the adjoining K D Medical College and Hospital is accessible in few seconds.





# Life at GLB





## Mentors Pool of GLBGI

### Mechanical Engineering

**Er Annu Singh Patel**, *M.Tech (Manufacturing & Automation), B Tech*  
**Er Saurabh Yadav**, *M Tech, NIT-Jalandhar, B Tech*  
**Er Ravi Kumar**, *M Tech (CAD/CAM), NIT-Surat, B E*  
**Er Sushil Kr Singh**, *M Tech (CAD), HBTI-Kanpur, B Tech*  
**Er Anshuman**, *M Tech (CAD/CAM) - Thapar University, B Tech*  
**Er Satendra Kumar**, *M Tech (Machine Design), B Tech*  
**Er Akriti Gupta**, *M Tech (CAD), HBTI-Kanpur, B Tech*  
**Er Satyadev Yadav**, *M.Tech (Metallurgy Specialization), IIT Roorkee, B.Tech*  
**Er Praveen Kr. Tyagi**, *M.Tech, DBANIT-Jalandhar, B.Tech*  
**Er Madhusudan Sharma**, *M.Tech (Metallurgical Engineering), IITBHU-Varanasi, B.Tech*  
**Mr. Nakul Agrawal**, *M.Tech, VNIT-Nagpur, B.Tech*  
**Er Arif Hassan Khan**, *B.Tech*

### Computer Science & Engineering

**Er Piyush Agnihotri**, *M Tech, NIT-Hamirpur, B E*  
**Er Sanjiv Agrawal**, *M Tech, B Tech*  
**Er Vinay Kumar**, *M Tech , B Tech*  
**Er Praveer Dubey**, *M Tech, GATE, BE*  
**Er Sonika Gill**, *M Tech, B Tech*  
**Er Dori Lal Sharma**, *M Tech (GIS & Remote Sensing) MNNIT-Allahabad, GATE, B Tech*  
**Er Sakshi Varshney**, *M.Tech (Information Technology), IIIT-A, B.Tech*  
**Er Praveen Kumar Rai**, *M Tech, B Tech*

### Civil Engineering

**Er Ram Sharan Singh**, *ME (Water Management), IIT-Roorkee, BE*  
**Er Nishant Kumar**, *M Tech (Structral Engg), MNIT-Jaipur, B Tech*  
**Er Ankur Rungta**, *M.Tech (Transportation System Engg.), NIT-Hamirpur, B.Tech*  
**Er Ismeet Singh Saluja**, *ME, PEC-Chandigarh, B.Tech*  
**Er Prince Malik**, *B.Tech, DTU-Delhi*  
**Er Anoop Bharti**, *B.Tech*

### Electronics & Communication Engineering

**Er Nitin Kumar Sahu**, *M Tech (Digital Communication), BIET-Jhanshi, GATE, B Tech*  
**Er Vivek Ranjan Mishra**, *M Tech (VLSI Design), VIT University, B Tech*  
**Er Vinita Mathur**, *M Tech (Automation & Robotics), B Tech*  
**Er Sucheta Yadav**, *M Tech, B E*  
**Er Ahamd Hasan Khan**, *M Tech, MNIT, Jaipur, B Tech*  
**Er Ankit Varshney**, *M.Tech (Power System & Drives)-AMU, B.Tech*  
**Er Ankur Maheshwari**, *B.Tech*  
**Er Saunam Saraswat**, *B Tech*



### Applied Science & Humanites

**Dr. Mukesh Chandra**, *Ph.D., M Sc (Physics)*  
**Dr. Ajay Kumar Upadhyay**, *Ph. D., M Phil, M Sc (Physics), B Ed*  
**Dr. Amit Parashar**, *Ph. D., M Sc (Chemistry)*  
**Dr. Satendra Kumar Singh**, *Ph D., M.Phil, M.Sc (Mathematics),*  
**Shiv Kumar Sharma**, *Ph D (Pur), M Sc (Mathematics)*  
**Shiv Kumar Singh Pundhir**, *M Tech, M Sc (Mathematics)*  
**Ashok Sharma**, *M Phil, MA (English), M A(Edu), M Sc(CS)*

### Management

**Gazal Singh**, *Ph D (Pur), MBA(HR & Mktg), UGC-NET*  
**Jitendra Singh**, *Ph D (Pur), MBA(HR & Mktg)*  
**Vinirdishtith Rana**, *MBA (Mktg & HR), LLB, UGC-NET*  
**Sapna Yadav**, *Ph D (Pur), MBA (HR & Finance), UGC-NET*  
**Tanushree Gupta**, *Ph.D (Pursuing), MBA (HR & Finance)*  
**Shruti Gupta**, *MBA(HR & Finance), UGC-NET*  
**Sandeep Shrivastava**, *MBA(Finance), Jiwaji University Gwalior, MA (History)*  
**Rakhi Singh**, *MBA*  
**Nimish Sharma**, *MA (Economics), UGC-NET*

### Architecture

**Ar Anurag Varma**, *Ph D (Pur), M Arch (Architectual Conservation), B Arch*  
**Ar Sunanda Kapoor**, *Ph D (Pur), M Arch(Architecture Design), B Arch*  
**Ar. Anurag Bansal**, *M Arch (Landscape Architecture), B. Arch*  
**Ar Sher Singh Baghel**, *M Arch (Medical Architecture), Jamila Millia Islamia, B Arch*  
**Ar. Piyush Pant**, *M.Arch (Landscape Architecture), B.Arch*  
**Ar. Yogesh Yadav**, *M.Arch (Conservation), SPA Bhopal, B. Arch*  
**Ar. Vaibhav Kulshrestha**, *Masters in Urban and Rural Planning (IIT Roorkee), B.Arch*  
**Ar. Pratyush Kumar**, *Master of City Planning (IIT Kharagpur), B.Arch*  
**Ar. Sugandha Chawla**, *Master of City Planning (IIT Kharagpur), B.Arch*  
**Ar. Monika Sharma**, *M.Arch (Sustainable Architecture), B.Arch*  
**Ar. Pooja Sharma**, *M.Arch (Landscape Architecture), B.Arch*  
**Satyapal Verma**, *MFA(Indira Kala Sangeet University), BFA (Lucknow University)*

### Corporate Resource Center

- Dr Vikas Jain
- Syed Abbas Hasan
- Sameer Agrawal
- Ankita Khandelwal

### Library

- Vishal Kumar Saxena
- Shailendra Kumar Shukla
- Sayed Javed Raza Jafri
- Avinash Kumar
- Charu Sharma



राज्यमित्रा केज्जस रिज्यूट के  
विशेष लक्षणों को ध्यान में रखी